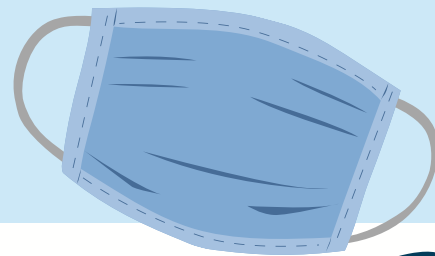


# COLONIAL HEALTH CENTER STUDENT WELL-BEING WEBINARS

## INFORMATION SESSIONS FOR FACULTY & STAFF

THURSDAYS 10-11AM VIA WEBEX



### All CHC Service Areas

AUGUST 13 ([link](#)) | AUGUST 27 ([link](#))

**Facility updates, in-office visits, and telehealth options for students during COVID-19**

Representatives: CAPS, Medical Services, Business Operations

### Student Health Insurance\*

SEPTEMBER 10 ([link](#))

**Using the Student Health Insurance Plan during COVID-19 and the waiver process**

Representative: SHIP

### Counseling & Psychological Services\*

SEPTEMBER 24 ([link](#))

**Ways to support student mental well-being; outline of CAPS services during COVID-19**

Representative: CAPS

### Medical Services\*

OCTOBER 8 ([link](#))

**Influenza Vaccine requirements for students and receiving medical services during COVID-19**

Representative: Medical Services

### Transitioning Back Home

NOVEMBER 12 ([link](#))

**Helping students transition back home**

Representative: CAPS, Medical Services

\*These sessions will include more intimate conversations as faculty and staff concerns are addressed.

#### COLONIAL HEALTH CENTER

Marvin Center, Ground Floor  
800 21st Street, NW | Washington, DC 20052

📞 202 - 994 - 5300  
🌐 [healthcenter.gwu.edu](http://healthcenter.gwu.edu)

✉️ [CHCoutreach@gwu.edu](mailto:CHCoutreach@gwu.edu)



Colonial  
Health Center

THE GEORGE  
WASHINGTON  
UNIVERSITY  
WASHINGTON, DC